

### Specifications

| Models                             | Z-34/22 IC 2WD |            | Z-34/22 IC 4WD |             |
|------------------------------------|----------------|------------|----------------|-------------|
| Measurements                       | Metric         | US         | Metric         | US          |
| Working height maximum*            | 12.52 m        | 40 ft 6 in | 12.62 m        | 40 ft 10 in |
| Platform height maximum            | 10.52 m        | 34 ft 6 in | 10.62 m        | 34 ft 10 in |
| Horizontal reach maximum           | 6.78 m         | 22 ft 3 in | 6.78 m         | 22 ft 3 in  |
| Up and over clearance maximum      | 4.57 m         | 15 ft      | 4.6 m          | 15 ft 1 in  |
| <b>A</b> Platform length           | 0.76 m         | 2 ft 6 in  | 0.76 m         | 2 ft 6 in   |
| <b>B</b> Platform width            | 1.42 m         | 4 ft 8 in  | 1.42 m         | 4 ft 8 in   |
| <b>C</b> Height - stowed           | 2.00 m         | 6 ft 7 in  | 2.06 m         | 6 ft 9 in   |
| <b>D</b> Length - stowed           | 5.64 m         | 18 ft 6 in | 5.66 m         | 18 ft 7 in  |
| <b>E</b> Storage height            | 2.26 m         | 7 ft 5 in  | 2.29 m         | 7 ft 6 in   |
| <b>F</b> Storage length            | 4.08 m         | 13 ft 5 in | 4.11 m         | 13 ft 6 in  |
| <b>G</b> Width                     | 1.73 m         | 5 ft 8 in  | 1.85 m         | 6 ft 1 in   |
| <b>H</b> Wheelbase                 | 1.88 m         | 6 ft 2 in  | 1.88 m         | 6 ft 2 in   |
| <b>I</b> Ground clearance - center | 0.15 m         | 6 in       | 0.17 m         | 6.5 in      |

### Productivity

|                          |                     |              |                     |              |
|--------------------------|---------------------|--------------|---------------------|--------------|
| Lift capacity            | 227 kg              | 500 lbs      | 227 kg              | 500 lbs      |
| Platform rotation        | 180°                | 180°         | 180°                | 180°         |
| Vertical jib rotation    | 139°                | 139°         | 139°                | 139°         |
| Turntable rotation       | 355° non-continuous |              | 355° non-continuous |              |
| Turntable tailswing      | zero                | zero         | zero                | zero         |
| Drive speed - stowed     | 4.8 km/h            | 3.0 mph      | 4.8 km/h            | 3.0 mph      |
| Drive speed - raised**   | 1.1 km/h            | 0.68 mph     | 1.1 km/h            | 0.68 mph     |
| Gradeability - stowed*** | 37%                 | 37%          | 45%                 | 45%          |
| Turning radius - inside  | 1.75 m              | 5 ft 9 in    | 1.80 m              | 5 ft 11 in   |
| Turning radius - outside | 4 m                 | 13 ft 1 in   | 4.11 m              | 13 ft 6 in   |
| Controls                 | 12V DC              | proportional | 12V DC              | proportional |
| Tyres - foam filled      | 23 x 37 cm          | 9 x 14.5 in  | 25.4 x 42 cm        | 10 x 16.5 in |

### Power

|                         |  |        |        |        |
|-------------------------|--|--------|--------|--------|
| Power source            | Tier IV Kubota D-1105 3-cylinder diesel 19.4 kW (26 hp)<br>Tier IV Perkins 403 D11 3-cylinder diesel 19.7 kW (26.4 hp) |        |        |        |
| Auxiliary power unit    | 12V DC   | 12V DC | 12V DC | 12V DC |
| Hydraulic tank capacity | 71.9 L   | 19 gal | 71.9 L | 19 gal |
| Fuel tank capacity      | 35.2 L   | 9 gal  | 35.2 L | 9 gal  |

### Sound & Vibration Levels

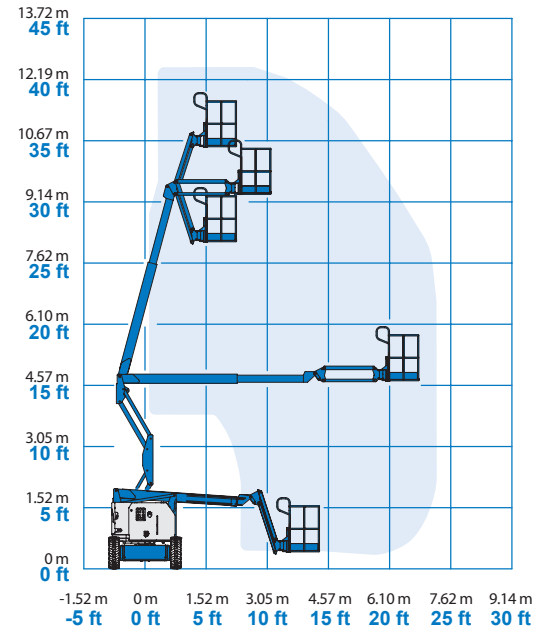
|   |                       |                           |                       |                           |
|---|-----------------------|---------------------------|-----------------------|---------------------------|
| Sound pressure level (ground workstation)   | <81 dBA               | <81 dBA                   | <81 dBA               | <81 dBA                   |
| Sound pressure level (platform workstation) | <80 dBA               | <80 dBA                   | <80 dBA               | <80 dBA                   |
| Vibration                                   | <2.5 m/s <sup>2</sup> | <8 ft 2 in/s <sup>2</sup> | <2.5 m/s <sup>2</sup> | <8 ft 2 in/s <sup>2</sup> |

### Weight\*\*\*\*

|                                    |          |            |          |            |
|------------------------------------|----------|------------|----------|------------|
| CE Industrial foam filled tyres    | 4,838 kg | 10,666 lbs | N/A      | N/A        |
| CE rough terrain foam filled tyres | 4,892 kg | 10,786 lbs | 4,929 kg | 10,986 lbs |

**Standards Compliance** EU Directives: 2006/42/EC - Machinery (harmonized standard EN280:2013); 2004/108/EC (EMC); 2000/14/EC (Outdoor Noise)

### Range Of Motion Z-34/22 IC

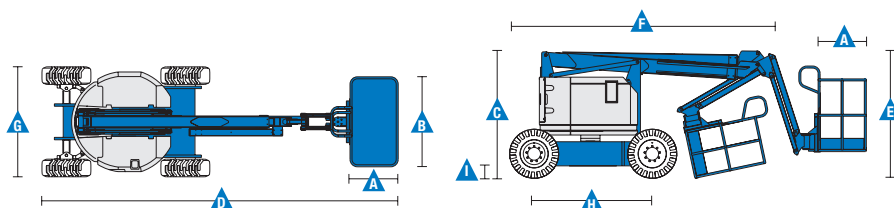


\* The metric equivalent of working height adds 2 m to platform height. U.S. adds 6 ft to platform height.

\*\* In lift mode (platform raised), the machine is designed to operate on firm, level surfaces only.

\*\*\* Gradeability applies to driving on slopes. See operator's manual for details regarding slope ratings.

\*\*\*\* Weight will vary depending on options and/or country standards.



### Features

| Standard Features | Easily Configured To Meet Your Needs | Options & Accessories |
|-------------------|--------------------------------------|-----------------------|
|-------------------|--------------------------------------|-----------------------|

#### Measurements

##### Z-34/22 IC 2WD

- 12.52 m (40 ft 6 in) working height
- 6.78 m (22 ft 3 in) horizontal reach
- 4.57 m (15 ft) up and over clearance
- Up to 227 kg (500 lbs) lift capacity

##### Z-34/22 IC 4WD

- 12.62 m (40 ft 10 in) working height
- 6.78 m (22 ft 3 in) horizontal reach
- 4.6 m (15 ft 1 in) up and over clearance
- Up to 227 kg (500 lbs) lift capacity

#### Productivity

- 1.22 m (4 ft) jib with 139° working range
- Self-levelling platform
- Hydraulic platform rotation
- Proportional joystick controls
- Telematics-Ready Connector
- Thumb rocker steer
- Drive enable
- AC power cord to platform
- Horn
- Hour meter
- Tilt alarm
- Descent & travel alarm
- Flashing beacon
- 355° non-continuous turntable rotation
- Locking turntable covers
- Zero tailswing and front arm swing
- Two speed wheel motors
- Certified load sensor

#### Power

- 12 V DC auxiliary power

#### Platform Options

- Steel 1.42 m (4 ft 8 in) (standard)

#### Jib

- Articulating 1.22 m (4 ft) jib boom

#### Engine Options

- Tier IV Kubota D-1105 3-cylinder diesel 19.4 kW (26 hp)
- Tier IV Perkins 403 D11 3-cylinder diesel 19.7 kW (26.4 hp)

#### Drive Options

- 4WD

#### Tyre Options

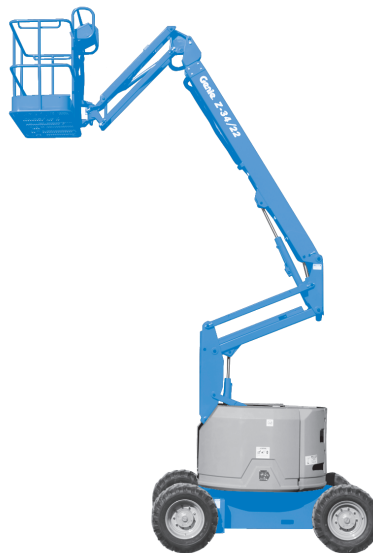
- Industrial foam-filled (standard 2WD)
- Industrial non-marking foam-filled
- Rough terrain foam-filled (standard 4WD)

#### Productivity Options

- Platform top auxiliary rail
- Air line to platform
- Power to platform (incl. plug, socket and ground fault interrupt leakage on request)
- Work lights package (2 on chassis, 2 on platform)
- Aircraft protection kit <sup>(1,2)</sup>: platform foam padding and padded disable system
- Hostile environment kit <sup>(2)</sup>: cylinder bellow, boom wiper seals and platform control box cover
- Biodegradable hydraulic oil <sup>(2)</sup>
- Tilt cut-out option
- Track & Trace <sup>(3)</sup> (Gps unit providing machine location & operating information)
- Lockable platform control box cover
- Tool tray
- Operator Protective Alarm
- Keypad unlocking device

#### Power Options

- Diesel muffler with spark arrestor <sup>(2)</sup> (Perkins only)
- Engine gauge package <sup>(2)</sup>: oil pressure, temperature & voltage
- AC Generator Packages (110 V / 60 Hz - 220 V / 50 Hz, 2200 W) <sup>(2)</sup>
- Low temperature cut-out module
- Engine heater option <sup>(4)</sup>
- Refinery kit with spark arrestor and electric or mechanical Chalmers valve <sup>(4)</sup>



<sup>(1)</sup> Reduces platform load capacity to 199,6 kg (440 lbs)  
<sup>(2)</sup> Factory - fit option only  
<sup>(3)</sup> Includes a first 2 years subscription  
<sup>(4)</sup> Available with Kubota engine only

### United Kingdom

The Maltings, Wharf Road, Grantham NG31 6BH, T: +44 800 988 3739 (toll free), Fax +44 (0)1476 584334, Email AWP-InfoEurope@terex.com  
 Visit [www.genielift.co.uk/locations](http://www.genielift.co.uk/locations) to view our global locations list.

### Worldwide Manufacturing And Distribution

Australia · Brazil · Caribbean · Central America · China · France · Germany · Italy · Japan · Korea · Mexico · Russia · Southeast Asia · Spain · Sweden · United Arab Emirates · United Kingdom · United States

Product specifications and prices are subject to change without notice or obligation. The photographs and/or drawings in this document are for illustrative purposes only. Refer to the appropriate Operator's Manual for instructions on the proper use of this equipment. Failure to follow the appropriate Operator's Manual when using our equipment or to otherwise act irresponsibly may result in serious injury or death. The only warranty applicable to our equipment is the standard written warranty applicable to the particular product and sale and we make no other warranty, express or implied. Products and services listed may be trademarks, service marks or trade names of Terex Corporation and/or their subsidiaries in the USA and many other countries. Genie is a registered trademark of Terex South Dakota, Inc. © 2016 Terex Corporation.

